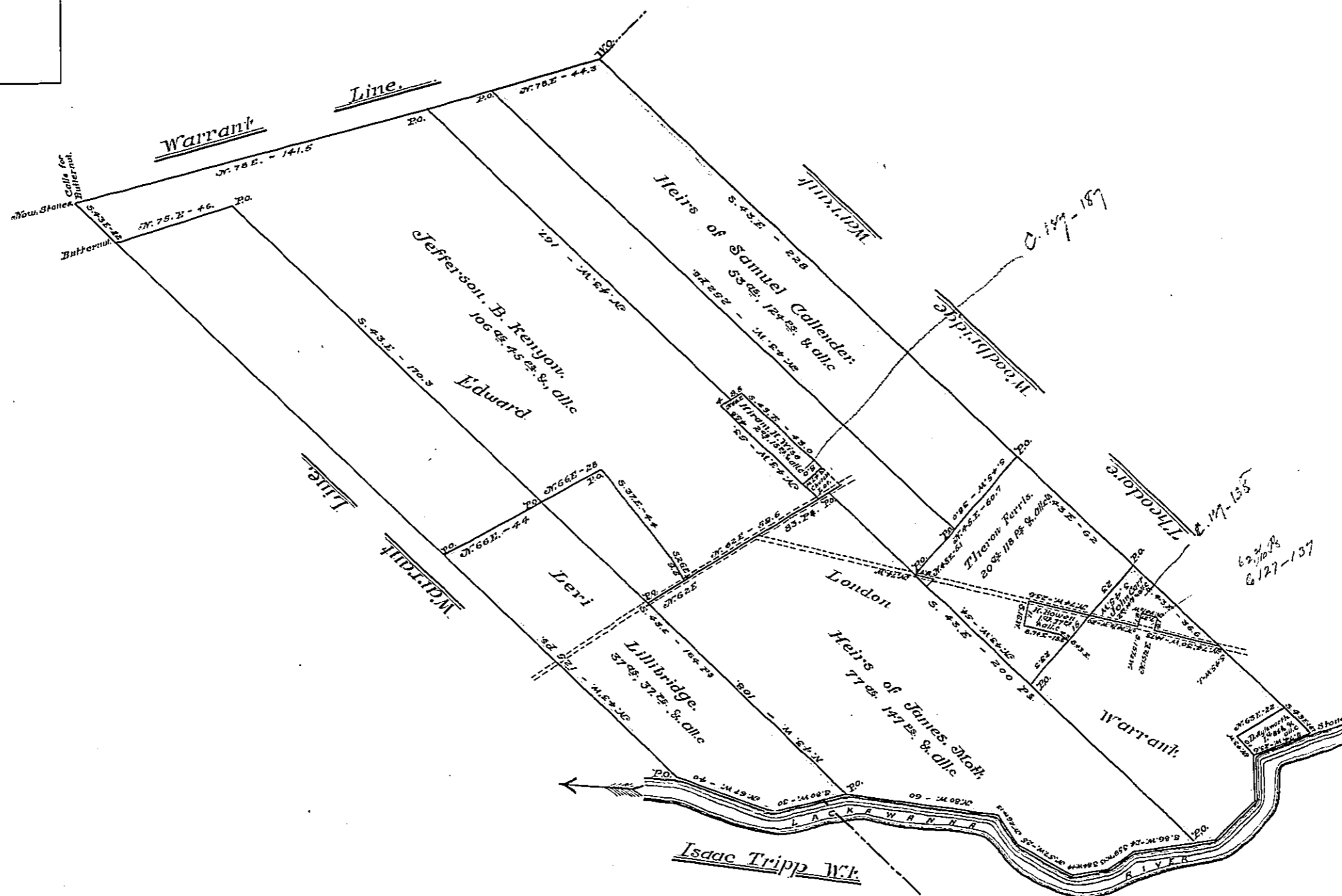


Endorsement on Back

Luzerne County
Edward London.
See another

No. 172.



Draft of a tract of land, surveyed to Edward London, 8th Sept. 1804, in pursuance of his warrant dated 27th Jan. 1804 by Thomas Sanborne deputy surveyor and certified by George Haines. Resurveyed in part 2nd Sep. 1867. (as shown above) for patenting separately to J.B. Kenyon, Levi Lillibridge, Heirs of James Mott, Heirs of Saml Callender, Hiram H. Wise, Theron Ferris, Henry Bowen, John Carr, and David Hylsworth; (Separate drafts having been certified, and forwarded to the Surveyor Genl's Office).

Examined and approved
Patrick Blewitt C^a Surveyor for
County of Luzerne.

John Sturdevant, C.S.
Surveyor for Luzerne Co.

In Testimony, That the above is a copy of the original remaining on file in the Department of Internal Affairs of Pennsylvania, made conformably to an Act of Assembly approved the 16th day of February, 1833, I have hereunto set my hand and caused the Seal of said Department to be affixed at Harrisburg the first day of August, 1910.

Henry Howell,
Secretary of Internal Affairs.